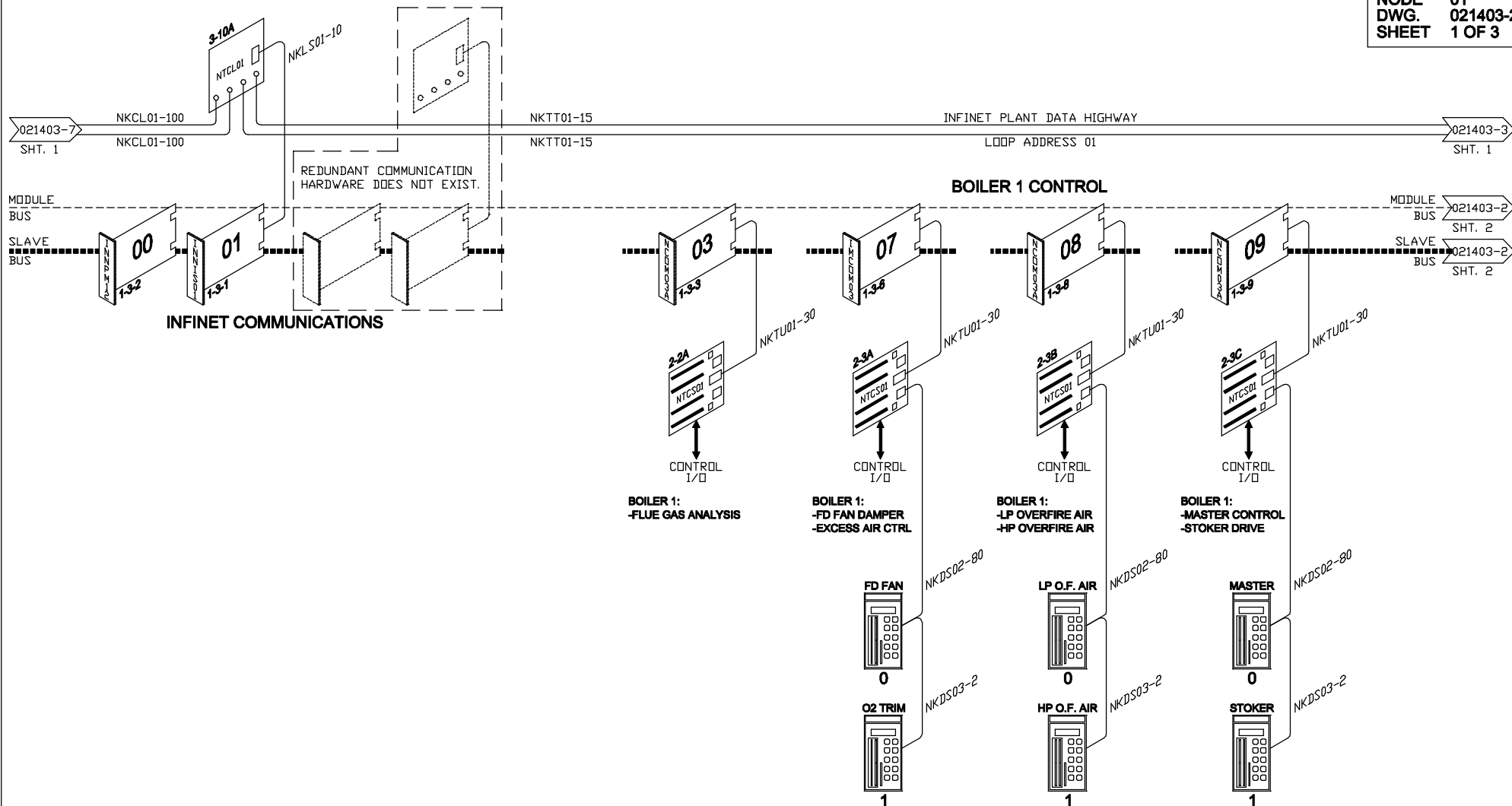


POWER STATION - PROCESS CONTROL UNIT 01

LOOP 01  
 NODE 01  
 DWG. 021403-2  
 SHEET 1 OF 3



AutoCAD NAME: GEXportSys0114030201.dwg

**INTEGRAL CONTROL SYSTEM SERVICES, INC.**  
 1303 SACKETT AVENUE  
 Cuyahoga Falls, Ohio 44223  
 Office: 330-923-6900 Fax: 330-923-2116

THIS DRAWING IS THE PROPERTY OF INTEGRAL CONTROL SYSTEM SERVICES, INC. NEITHER THE DRAWING, NOR REPRODUCTIONS OF IT, NOR INFORMATION DERIVED FROM IT IS TO BE GIVEN TO OTHERS. NO USE IS TO BE MADE OF IT WHICH IS OR MAY BE INJURIOUS TO INTEGRAL CONTROL SYSTEM SERVICES, INC.

APPROVED BY	DATE	DRAWING NO.	PART NO.
THIS SHEET ALSO USED FOR			
DIMENSIONAL TOLERANCES UNLESS OTHERWISE SPECIFIED:		3rd ANGLE PROJECTION	
MILLIMETRES		INCHES	
1 PLACE ± 0.3 mm	2 PLACE ± .01	DO NOT SCALE DRAWING	
2 PLACE ± 0.003 mm	3 PLACE ± .001		
3 PLACE ± 0.015 mm	4 PLACE ± .0005		

QTY.	LINE NUMBER(S)	MANUFACTURER/DESCRIPTION	PART (MODEL) #
	PART NO.	SHEET 1 SHEETS 3	DRAWING NO. 021403-2
DES. BY	DET. BY	TITLE	
CHECKED BY	SAFETY OK	BAILEY NETWORK 00 DISTRIBUTED CONTROL SYSTEM ARCHITECTURE	
DATE	SCALE	PROCESS CONTROL UNIT 01	
		DIVISION: POWER STATION	
		PLANT:	
		LOCATION/ACTIVITY:	